

es ironworks

DESKS



Model Number

ESIDDM5424SPTB-PV

Dimensions

54Wx24Dx29H

Finishes

available in dozens of Invincible colors, smooth and textured finishes, no upcharges

Sizes

Features

ESIDDM5424SPTB-PV

ES = es series
ID = ironworks desk
D = Dtop
M = mobile
5424 = 54Wx24D
S = S back panel (8")
P = perforated back panel
T = ironworks Tleg
B = box box file ped
-PV = pvc edge

example of item part numbers

ESIDDM5424NTB-PV no back panel
ESIDDM5424STB-PV 'S' short back panel
ESIDDM5424SPTB-PV perforated Sbp
ESIDDM5424SPATB-PV angled perf Sbp

please refer to pricer for full offering



perforated
modesty panel
optional



PVC edge standard
T-mold as illustrated here
available by special request



indestructible
ironworks leg and foot
for a lifetime of use

sleek new design for the modern classroom

available in
48, 54 and 60 wide
24 and 30 deep



1-1/4" laminate top
M3 commercial grade
wood core
(45#-48# density)



24D provide smaller footprint
for ease of mobility
30D yields additional storage capacity



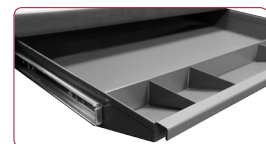
one-piece multi-formed
22ga cold rolled steel pedestal body
18ga bottom welded to the jacket

four multi-formed
18ga uprights
welded to jacket
and bottom stiffener

full progressive
ball bearing race suspensions

lock bar is 18ga steel
2pc multi-formed & welded

drawers 22ga
multi-formed bodies
22 ga drawer fronts



optional center drawer



invincible
building forever furniture

(V) 877 682 4601
(F) 920 683 2970
sales@invinciblefurniture.com

842 South 26th Street PO Box 1117
Manitowoc, Wisconsin 54221-1117
invinciblefurniture.com